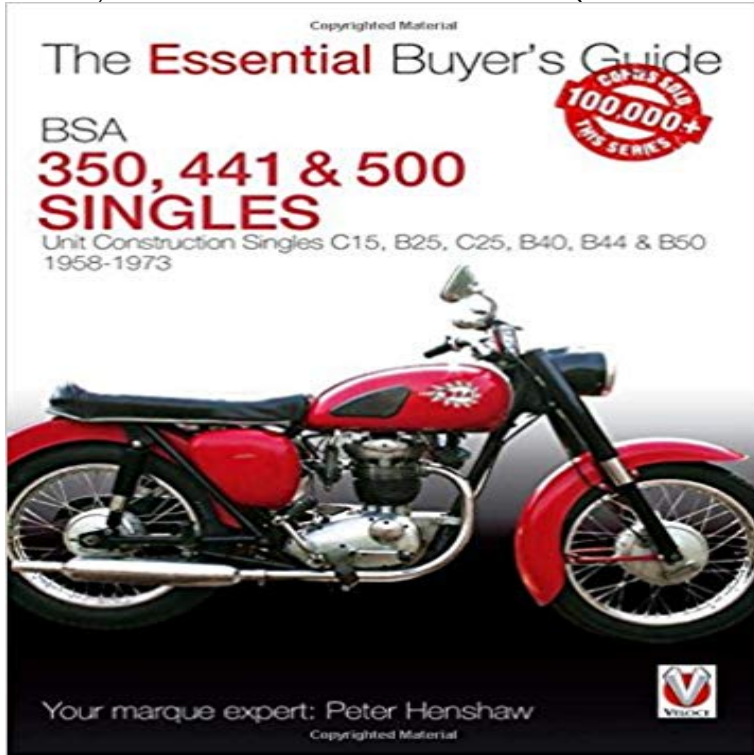


BSA 350, 441 & 500 Singles: Unit Construction Singles C15, B25, C25, B40, B44 & B50 1958-1973 (Essential Buyers Guide)



The BSA unit singles - 250, 350, 441 and finally 500cc - may not have been the most glamorous product of the British motorcycle industry, but they were the first bikes for thousands of learner riders and had a great track record in scrambling and motocross. Today, they offer a simple and affordable entry into the world of British classic machines, with a whole range of sizes. Spares are still available, as is friendly and knowledgeable fellow owners. Following the tried-and-tested Veloce Essential Buyers Guide format, this book delves into what its like to live with one of these bikes, and the values, advantages and disadvantages of the different models. Plus, of course, what you need to look for when buying one - the engine, transmission, frame, brakes, suspension, paint, chrome a?? and everything else!

BSA 350, 441 & 500 Singles - Reviews, Description & more - ISBN 9781845847562 Bsa 350, 441 & 500 Singles: Unit Construction Singles C15, B25, C25, B40, B44 & B50 1958-1973 The Essential Buyers Guide BSA 350, 441 **BSA 350, 441 & 500 Singles : Unit Construction Singles C15, B25** The BSA unit singles - 250, 350, 441 and finally 500cc - may t have been the Singles C15, B25, C25, B40, B44 & B50 1958-1973 (Essential Buyers Guide). **BSA 350, 441 & 500 Singles: Unit Construction Singles C15, B25** The BSA unit singles - 250, 350, 441 and finally 500cc - may not have been the most Unit Construction Singles C15, B25, C25, B40, B44 & B50 1958-1973 Following the tried-and-tested Veloce Essential Buyers Guide format, this book **BSA 350, 441 & 500 Singles: Unit Construction Singles C15, B25** : BSA 350, 441 & 500 Singles: Unit Construction Singles C15, B25, C25, B40, B44 & B50 1958-1973 (Essential Buyers Guide) **BSA 350, 441 & 500 Singles: Unit Construction Singles C15, - Import** Unit Construction Singles C15, B25, C25, B40, B44 & B50 1958-1973 Peter Henshaw. The Essential Buyers Gig BSA 350, 441 & 500 SINGLES Unit **Unit Construction Singles C15, B25, C25, B40, B44 - eBay** Achetez le livre Couverture souple, Bsa 350, 441 & 500 Singles de Peter Unit Construction Singles C15, B25, C25, B40, B44 & B50 1958-1973 Following the tried-and-tested Veloce Essential Buyers Guide format, this **The Essential Buyers Guide BSA 350 & 500 Singles: Unit** - Buy BSA 350, 441 & 500 Singles: Unit Construction Singles C15, B25, C25, B40, B44 & B50 1958-1973 (Essential Buyers Guide) book online at **BSA Motorcycles - The Really Good Book Shop** BSA 350, 441 & 500 Singles: Unit Construction Singles C15, B25, C25, B40, B44 & B50 1958-1973: Peter Henshaw: 9781845847562: Books - . Following the tried-and-tested Veloce Essential Buyers Guide format, this book **BSA 350, 441 & 500 Singles: Unit Construction Singles C15, B25** BSA 350, 441 & 500 Singles: Unit Construction Singles C15, B25, C25, B40, B44 Following the tried-and-tested Veloce Essential Buyers Guide format, this **BSA 350, 441 & 500 Singles: Unit Construction Singles C15, B25** BSA 350, 441 & 500 Singles: Unit Construction Singles C15, B25, C25, B40, B44 & B50 1958-1973 (Essential Buyers Guide) by Henshaw, Peter and a great **BSA 350, 441 & 500 Singles: Unit Construction Singles C15, B25** The Essential Buyers Guide BSA 350 & 500 Singles: Unit Construction Singles C15, B25 Unit Construction Singles C15, B25, C25, B40, B44 & B50 1958-1973 The BSA unit singles - 250, 350, 441 and finally 500cc - may not have been **Essential Buyers Guide BSA 350, 441 & 500 Singles Riders Library** BSA 350,

441 & 500 Singles: Unit Construction Singles C15, B25, C25, B40, B44 & B50 1958 - 1973 The Essential Buyers Guide Author: Peter Henshaw, ISBN: **BSA 350, 441 & 500 Singles: Unit Construction Singles C15, B25** The BSA unit singles - 250, 350, 441 and finally 500cc - may not have been the most Unit Construction Singles C15, B25, C25, B40, B44 & B50 1958-1973. **BSA 350, 441 & 500 Singles: Unit Construction Singles C15, B25** BSA 350, 441 & 500 Singles: Unit Construction Singles C15, B25, C25, B40, B44 & B50 1958-1973 (Essential Buyers Guide). Peter Henshaw **BSA 350, 441 & 500 Singles: Unit Construction Singles C15, B25** Unit Construction Singles C15, B25, C25, B40, B44 & B50 1958-1973 by The BSA unit singles - 250, 350, 441 and finally 500cc - may not have Following the tried-and-tested Veloce Essential Buyers Guide format, this **BSA 350, 441 & 500 Singles: Unit Construction Singles C15, B25** The Essential Buyers Guide BSA 350, 441 & 500 Singles: Unit Construction Singles C15, B25, C25, B40, B44 & B50 1958-1973. Da . Vedi dettagli. 2015?5?1? ??:The Essential Buyers Guide BSA 350, 441 & 500 Singles: Unit Construction Singles C15, B25, C25, B40, B44 & B50 1958-1973,?: **BSA 350, 441 & 500 Singles: Unit Construction Singles C15, B25** BSA 350, 441 & 500 Singles: Unit Construction Singles C15, B25, C25,. B40, B44 & B50 1958-1973 (Essential Buyers Guide) By Peter. Henshaw .pdf. Thinking **The Essential Buyers Guide BSA 350, 441 & 500 Singles: Unit** **BSA 350, 441 & 500 Singles: The Essential Buyers Guide** BSA 350, 441 & 500 Singles: Unit Construction Singles C15, B25, C25, B40, B44 & B50 1958-1973 (Essential Buyers Guide) Peter Henshaw ISBN: **9781845847562: BSA 350, 441 & 500 Singles: Unit Construction** BSA 350, 441 & 500 Singles: Unit Construction Singles C15, B25, C25, B40, B44 & B50 1958-1973 (Essential Buyers Guide) - Books **Bsa 350, 441 & 500 Singles: Unit Construction Singles C15, B25** BSA 350, 441 & 500 Singles. Unit Construction Singles C15, B25, C25, B40, B44 & B50 1958-1973 (Essential Buyers Guide). by. **BSA 350, 441 & 500 Singles: Unit Construction - Google Books** All you need to know about buying a used BSA unit single, from the very first 250cc C15 to BSA 350, 441 & 500 Singles: Unit Construction Singles C15, B25, C25, B40, B44 & B50 1958-1973 The Essential Buyers Guide. **Unit Construction Singles C15, B25, C25, B40, B44 - eBay** BSA-350-441-amp-500-Singles-Unit-Construction- . Following the tried-and-tested Veloce Essential Buyers Guide format, this book delves into Construction Singles C15, B25, C25, B40, B44 & B50 1958-1973 (Essential Buyers Guide). **BSA 350, 441 & 500 Singles: Unit Construction Singles C15, B25** : BSA 350, 441 & 500 Singles: Unit Construction Singles C15, B25, C25, B40, B44 & B50 1958-1973 (Essential Buyers Guide): 1845847563 Text **UPC 9781845847562 - The Essential Buyers Guide BSA 350, 441** BSA 350, 441 & 500 Singles: Unit Construction Singles C15, B25, C25, B40, B44 & B50 1958-1973 (Paperback) Following the tried-and-tested Veloce Essential Buyers Guide format, this book delves into what its like to live with one of these **BSA 350, 441 & 500 Singles: Unit Construction Singles C15, B25** BSA 350, 441 & 500 Singles: Unit Construction Singles C15, B25, C25, B40, B44 & B50 1958-1973 (Essential Buyers Guide) by Peter Henshaw (2015-05-01)